

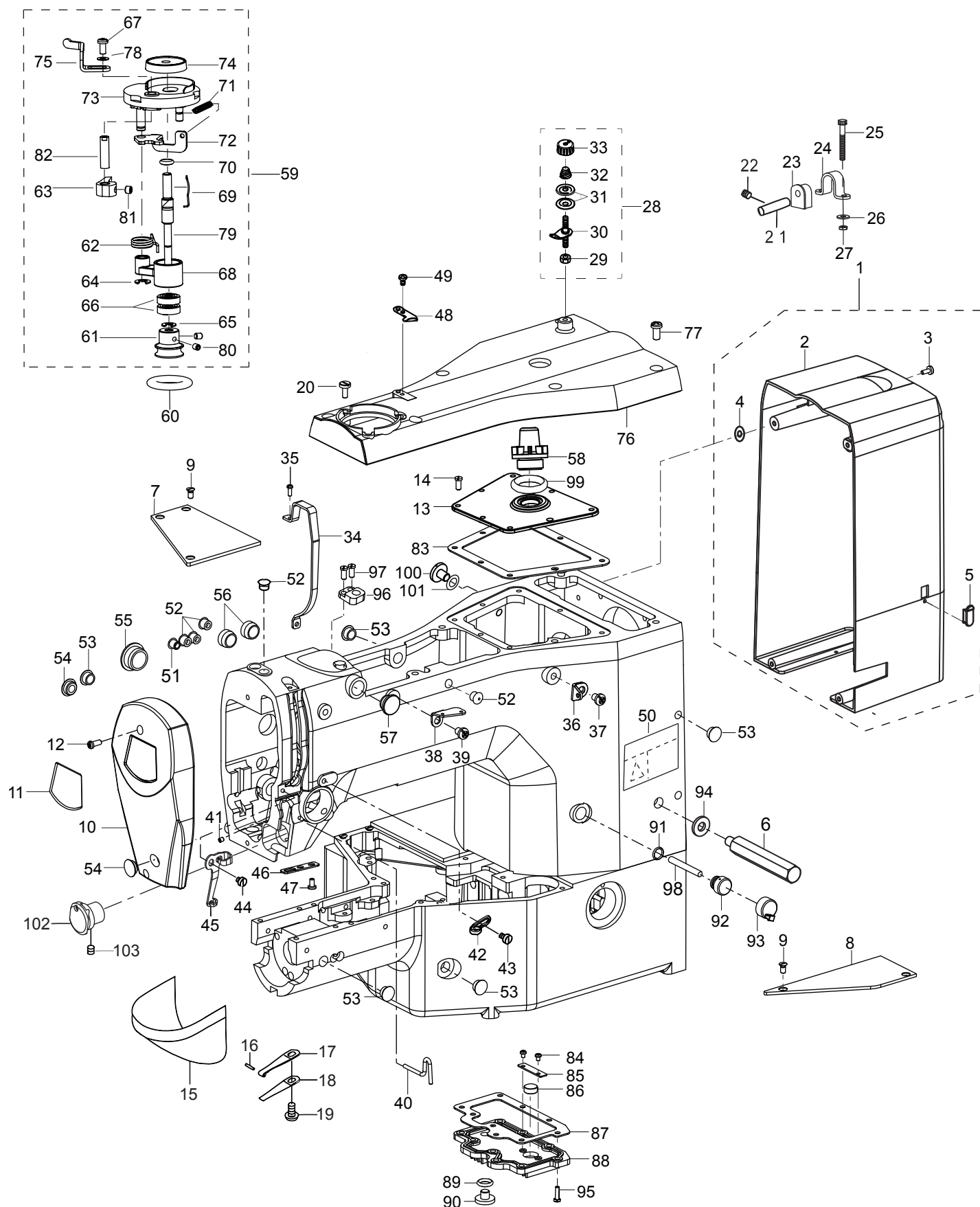
CONTENTS

目 录

1.FRAME&MISCELLANEOUS COMPONENTS.....	1
机壳部件	
2.MAIN SHAFT&NEEDLE BAR COMPONENTS.....	4
挑线刺布部件	
3.SHUTTLE DRIVER SHAFT COMPONENTS.....	7
下轴部件	
4.LIFT PRESSERS COMPONENTS.....	9
抬压部件	
5.TENSION RELEASE&THREAD TENSION COMPONENTS.....	12
松线部件	
6.TENSION RELEASE&THREAD TRIMMER MECHANISM COMPONENTS.....	14
剪线部件	
7.FEED MECHANISM COMPONENTS.....	17
送料部件	
8.PNEUMATIC COMPONENTS.....	20
气动部件	
9.SENSOR COMPONENTS(-03)	22
自动控制部件(-03)	
10.SENSOR COMPONENTS(-04)	24
自动控制部件(-04)	
11. THREAD STAND COMPONENTS.....	26
线架部件	
12. ACCESSORIES PART COMPONENTS.....	28
附件	

1.FRAME&MISCELLANEOUS COVER COMPONENTS

机壳部件



1、机壳部件FRAME&MISCELLANEOUS COVER COMPONENTS

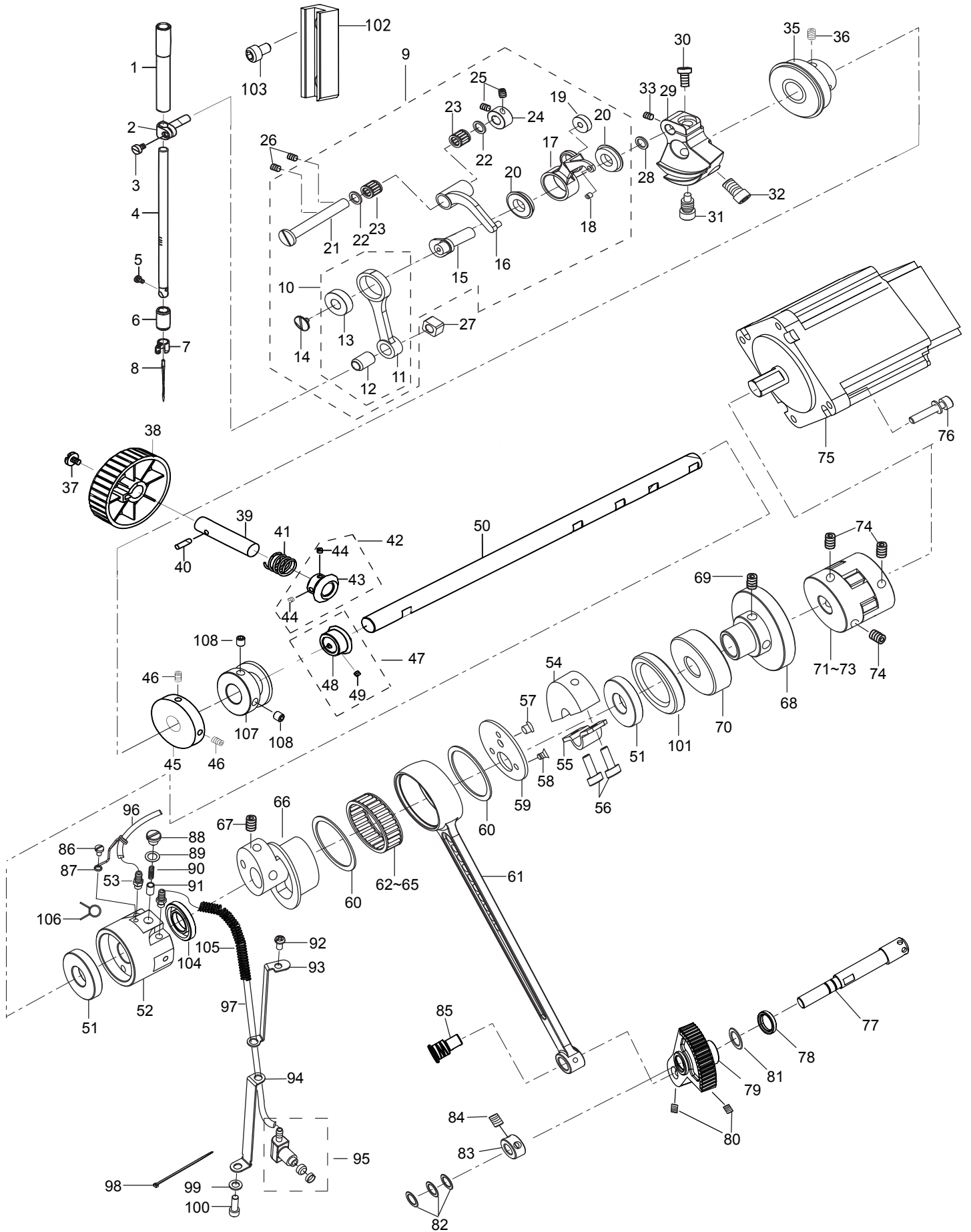
序号 Ref.No.	件号 Part No.	名 称	Description	数量 QTY
1	20019475	后罩组件	MOTOR COVER ASM	1
2	20019515	后罩	MOTOR COVER	1
3	10010900	螺钉 SM11/64"×40 L=12	SCREW SM11/64"×40 L=12	4
4	10011135	垫片	STOPPER	4
5	10053600	橡胶塞	RUBBER PLUG	1
6	10052703	手柄	HAND SHANK	2
7	20004112	左盖板	BED COVER LEFT	1
8	20004113	右盖板	BED COVER RIGHT	1
9	10011559	螺钉	SCREW	5
10	20004104	面板☆	FACE COVER	1
11	10005468	面板装饰牌☆	PLATE	1
12	10011150	螺钉	SCREW	2
13	10051609	上密封盖板	UPPER SEAL PLATE	1
14	10013567	螺钉	SCREW	7
15	20001911	梭床罩	CYLINDER ARM CAP	1
16	10010815	销	PIN	1
17	10011420	梭床罩弹簧A	HOOK COVER PRESSER SPRING A	1
18	10010807	梭床罩弹簧B	HOOK COVER PRESSER SPRING B	2
19	10010808	螺钉	SCREW	1
20	10011101	螺钉	SCREW	3
21	10011141	销	PIN	2
22	10011232	螺钉	SCREW	2
23	10011137	机头胶垫	HINGE RUBBER	2
24	10011160	支撑固定架	BED HINGE	2
25	10011147	螺钉	SCREW	4
26	10003076	垫圈	WASHER	4
27	10003084	螺母	NUT	8
28	10011595	绕线夹线器	BOBBIN THREAD TENSION ASM	1
29	10004507	螺母	NUT	1
30	10004504	中过线板组件	BOBBIN THREAD TENSION ROD ASM	1
31	10004393	夹线板	THEAD TENSION DISK	2
32	10004391	弹簧	CONNECTING ROD SPRING	1
33	10004686	螺母	NUT	1
34	20003790	挑线杆防护罩	BALANGE COVER	1
35	10011143	螺钉	SCREW	2
36	10011145	单眼过线板	THREAD GUIDE NO. 1	1
37	10011158	螺钉	SCREW	1
38	10011200	上过线板	THREAD GUIDE PLATE	1
39	10011158	螺钉	SCREW	1
40	10037247	拦线钩	L-SHAPEDTHREAD GUIDE A	1
41	10011887	螺钉	SCREW	1
42	10008940	右线钩	ARM THREAD GUIDE A	1
43	10011142	螺钉	SCREW	1
44	10011142	螺钉	SCREW	1
45	10053336	中线钩	TAKE-UP THREAD GUIDE B	1
46	10037421	下过线板	ARM THREAD GUIDE B	1
47	10010668	螺钉	SCREW	2
48	10011149	绕线切刀	THREAD CUTTER	1
49	10011143	螺钉	SCREW	1
50	10008936	机头安全提示牌	SAFETY LABEL	1

1、机壳部件FRAME&MISCELLANEOUS COVER COMPONENTS

序号 Ref.No.	件号 Part No.	名称	Description	数量 QTY
51	10011188	橡胶塞 ϕ 7.4	RUBBER PLUG ϕ 7.4	2
52	10010587	橡胶塞 ϕ 8.5	RUBBER PLUG ϕ 8.5	5
53	10011136	橡胶塞 ϕ 10.5	RUBBER PLUG ϕ 10.5	5
54	10011099	橡胶塞 ϕ 12.5	RUBBER PLUG ϕ 12.5	2
55	10011146	橡胶塞 ϕ 20.8	RUBBER PLUG ϕ 20.8	2
56	10014279	橡胶塞 ϕ 15.3	RUBBER PLUG ϕ 15.3	2
57	10011190	橡胶塞 ϕ 14.5	RUBBER PLUG ϕ 14.5	1
58	10012438	油窗	OIL TANK	1
59	10031159	绕线器	BOBBIN WINDER ASM	1
60	10008773	橡胶轮	RUBBER RING	1
61	10027392	绕线轮	BOBBIN WINDER WHEEL	1
62	10004501	弹簧	SPRING	1
63	10027395	绕线定位块	BOBBIN WINDER REGULATOR	1
64	10013038	挡圈	E-RING	1
65	10007895	挡圈	E-RING	1
66	10003517	625ZZ轴承	BEARING	1
67	10009455	螺钉	SCREW	1
68	10027388	摆动连杆	BOBBIN WINDER SHAFT COMPL	1
69	10031058	弹簧	LATCH SPRING	1
70	10027399	O型圈	RUBBER RING	1
71	10027394	弹簧	SPRING	1
72	10027391	控制板	ADJUSTING PLATE	1
73	10031087	梭心卷绕体组件	BOBBIN FITING BASIS COMPL	1
74	10027390	卷绕轴垫	CUSHING	1
75	10030709	卷绕手柄	BOBBIN LEVER	1
76	20018537	上盖	TOP COVER	1
77	10011161	螺钉	SCREW	6
78	10003122	垫圈	WASHER	1
79	10031163	梭芯卷绕轴	BOBBIN SHAFT	1
80	10002896	螺钉	SCREW	2
81	10012014	螺钉	SCREW	1
82	10006152	绕线凸轮轴	BOBBIN CAM SHAFT	1
83	10037218	上密封盖板垫	UPPER SEAL GASKET	1
84	10000040	螺钉	SCREW	2
85	10001242	垫板	PLATE	1
86	10001096	磁铁	MAGNET	1
87	10037232	齿轮箱盖密封垫	GEAR BOX SEAL GASKET	1
88	10037233	齿轮箱底盖	GEAR BOX COVER	1
89	10010240	O形圈	RUBBER RING	1
90	10008783	螺钉	SCREW	1
91	10012139	O形圈	RUBBER RING	1
92	10002483	排气阀	EXHAUST VALVE	1
93	10008771	橡胶盖	RUBBER COVER	1
94	10028127	橡胶垫 ϕ 8 \times ϕ 20 \times 3.5	RUBBER WASHER ϕ 8 \times ϕ 20 \times 3.5	2
95	10013567	螺钉 SM11/64" \times 40 L=15.8	SCREW SM11/64" \times 40 L=15.8	9
96	10031167	上盖支块	SCREW BLOCK	1
97	10011143	螺钉 SM9/64" \times 40 L=7	SCREW SM9/64" \times 40 L=7	2
98	10021559	销	PIN	1
99	10008939	O形圈	RUBBER RING	1
100	10051608	螺钉 SM5/16" \times 24 L=10	SCREW SM5/16" \times 24 L=10	1
101	10009988	橡胶垫 ϕ 7.8 \times ϕ 13.5 \times 1.3	RUBBER WASHER ϕ 7.8 \times ϕ 13.5 \times 1.3	1
102	10040925	小电子夹线器组件	SMALL THREAD TENSION ASM.	1
103	10013590	SM11/64" \times 40螺钉	SCREW SM11/64" \times 40	1

2.MAIN SHAFT&NEEDLE BAR COMPONENTS

挑线刺布部件



2、挑线刺布部件MAIN SHAFT & NEEDLE BAR COMPONENTS

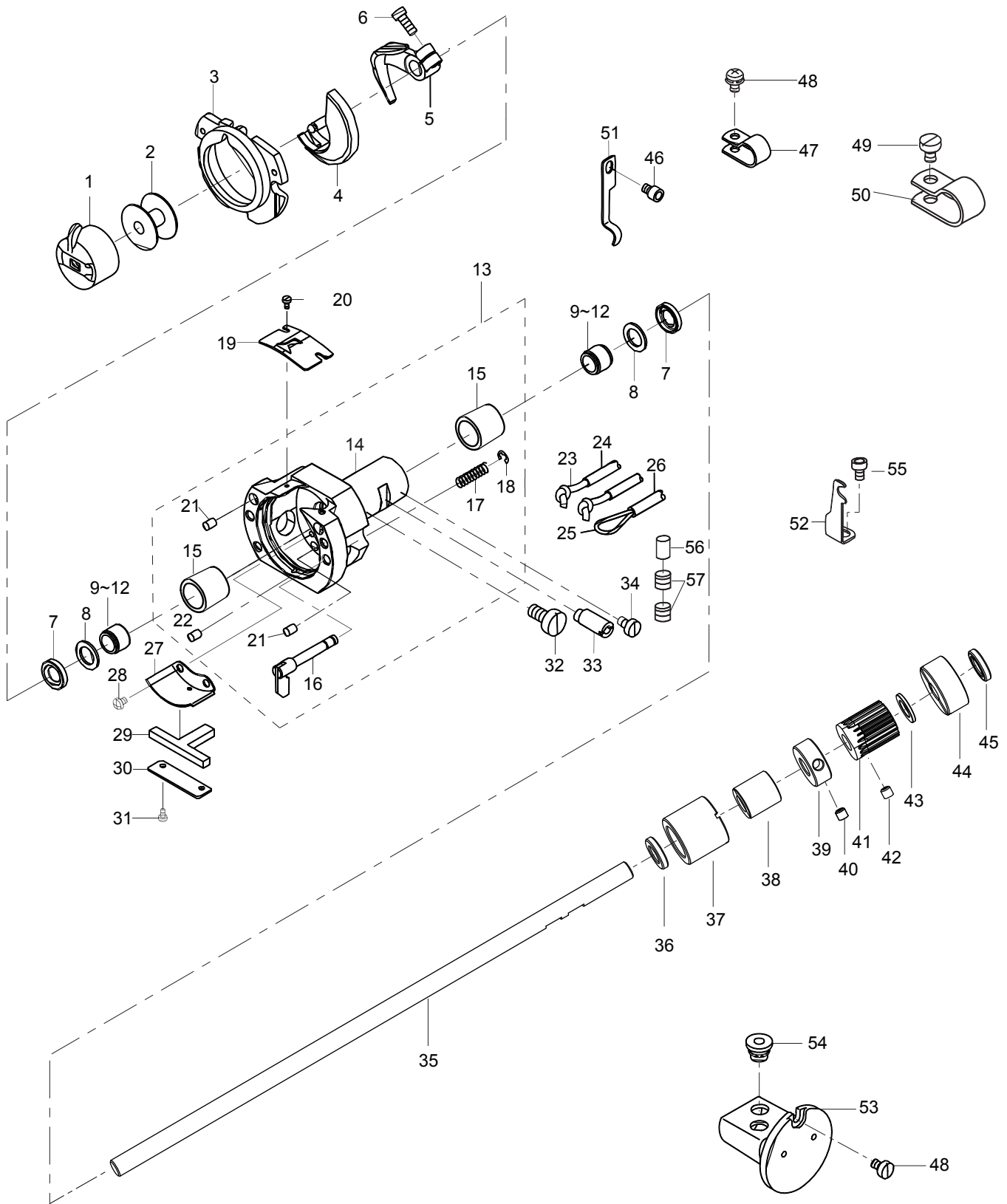
序号 Ref.No.	件号 Part No.	名称	Description	数量 QTY
1	10028715	轴套	NEEDLE ROD SLEEVE	1
2	10010590	针杆连接柱	NEEDLE BAR CONNECTING COLUMN	2
3	10010643	螺钉	SCREW	1
4	10014277	针杆	NEEDLE BAR	1
5	10011699	螺钉	SCREW	1
6	10028716	轴套	NEEDLE ROD LOWER METAL	1
7	10011701	针杆线钩	THREAD GUIDE	1
8	10023286	机针	NEEDLE DP? #16	1
9	10051398	挑线杆组件	THREAD TAKE UP COMPL	1
10	10007983	针杆连杆组件	NEEDLE BAR CRANK BOD ASM	1
11	10007986	针杆连杆	NEEDLE BAR CRANK ROD	1
12	10005793	针杆连杆轴套	NEEDLE BAR CRANK BOD METAL	1
13	10009777	轴承	BEARING	1
14	10010537	螺钉	SCREW	1
15	10008014	挑线曲柄	NEEDLE BAR CRANK	1
16	10007987	挑线连杆	THREAD TAKE UP CRANK	2
17	10007985	挑线杆	THREAD TAKE UP LEVER	1
18	10004161	挑线杆过线套	THREAD PASS BUSH	1
19	10003591	轴承	BEARING	1
20	10051399	轴承	BEARING	2
21	10007984	挑线连杆销	BALANCE CRANK PIN	1
22	10005786	挡圈	THRUST COLLAR	2
23	10005747	轴承	BEARING	2
24	10005745	挡圈	THRUST COLLAR	1
25	10004482	螺钉	SCREW	2
26	10000314	螺钉	SCREW	2
27	10011194	针杆连接柱滑块	SQUARE BLOCK	1
28	10011622	挡圈	THRUST COLLAR	1
29	10052054	针杆曲柄	COUNTER EIGHT	1
30	10014272	螺钉	SCREW	1
31	10014282	螺钉	SCREW	1
32	10014284	螺钉	SCREW	1
33	10022863	螺钉 M6×0.75 L=6	SCREW M6×0.75 L=6	1
35	10051684	轴承组件_6004	BEARING ASM 6004	1
36	10000314	螺钉M6×8	SCREW M6×8	2
37	10011225	螺钉	SCREW	1
38	10011603	手轮	PULLEY	1
39	10011231	手轮轴	HAND PULLEY SHAFT	1
40	10006073	销	PIN	1
41	10011242	弹簧	SPRING	1
42	10021312	弧齿锥齿轮组件_手轮轴	GEAR ASM.	1
43	10011235	齿轮	GEAR	1
44	10011226	螺钉	SCREW	2
45	10002392	绕线主动轮	BTW DRIVING WHEEL	1
46	10011223	螺钉	SCREW	2
47	10027407	上轴齿轮组件	GEAR ASM.	1
48	10002413	齿轮	GEAR	1
49	10011226	螺钉	SCREW	2
50	10052704	上轴	MAIN SHAFT	2
51	10010507	油封	OIL SEAL	2
52	10037249	油泵体组件	OIL PUMP ASM.	2
53	10008779	油管接头	JOINT	1

2、挑线刺布部件MAIM SHAFT & NEEDLE BAR COMPONENTS

序号 Ref.No.	件号 Part No.	名称	Description	数量 QTY
54	10014337	上轴平衡轮	CRANK BALANCER	1
55	10014332	上轴平衡轮固定板	CRANK BALANCER FIX PLATE	1
56	10011644	螺钉	SCREW	2
57	10014266	橡胶塞	PUBBER PLUG	1
58	10009626	螺钉	SCREW	3
59	10014268	大连杆滚针轴承盖板	CRANK ROD SUPPORT PLATE	1
60	10014269	挡圈	RETAINING COLLAR	2
61	10037219	大连杆	CRANK ROD	1
62	10023508	轴承	BEARING	1
63	10023509	轴承	BEARING	1
64	10023510	轴承	BEARING	1
65	10023511	轴承	BEARING	1
66	10014265	偏心轮	ECCENTRIC WHEEL	1
67	10009187	螺钉	SCREW	2
68	10052770	剪线凸轮	TRIMMER CAM	1
69	10010678	螺钉 SM15/64"×28 L=8	SCREW SM15/64"×28 L=8	2
70	10011926	6204轴承	BEARING 6204ZZ	1
71	10012615	电机端联轴器	COUPLING	1
72	10011227	传动连接橡胶块	RELAX	1
73	10012613	上轴端联轴器	COUPLING	1
74	10009187	螺钉	SCREW	4
75	10053611	上轴电机-03	AC SERVO MOTOR-03	1
75	10053840	上轴电机-04	AC SERVO MOTOR-04	1
76	10000157	螺钉	SCREW	4
77	10037229	销	PIN	1
78	10010577	油封	OIL SEAL	1
79	10037230	齿轮	BEARING	2
80	10011232	螺钉	SCREW	2
81	10037231	垫圈	WASHER	1
82	10010146	O形圈	RUBBER RING	3
83	10004600	挡圈	RETAINING COLLAR	1
84	10013590	螺钉	SCREW	2
85	10037228	销	PIN	1
86	10002129	螺钉	SCREW	1
87	10037260	油管定位架	FILLER PIPE HOLDER	1
88	10013232	螺钉	SCREW	1
89	10037261	防油纸垫	PAPER SPACER	1
90	10013238	活塞弹簧	SPRING	1
91	10012609	柱塞	PLUNGER	1
92	10011570	螺钉	SCREW	1
93	10037221	上油管架	UPPER FILLER PIPE BRACKET	1
94	10037222	下油管架	LOWER FILLER PIPE BRACKET	1
95	10000471	油管二接头	FILLER PIPE JOINT ASM.	1
96	10007800	φ3×φ5油管	φ3×φ5 FILLER PIPE	50mm
97	10007800	φ3×φ5油管	φ3×φ5 FILLER PIPE	310mm
98	40000363	扎带	BINDING TAPE	3
99	10006115	垫圈	WASHER	1
100	10013616	螺钉	SCREW	1
101	10039126	油封衬套	OIL SEAL METAL	1
102	10037240	滑块槽	SQUARE BLOCK TROUGH	1
103	10014477	螺钉	SCREW	2
104	10013448	油封	OIL SEAL	1
105	10051546	弹簧	SPRING	1
106	10012160	弹簧	SPRING	2
107	10030518	中压脚凸轮	DRIVING WHEEL	1
108	10011232	螺钉 M6×6	SCREW M6×6	2

3.SHUTTLE DRIVER SHAFT COMPONENTS

下轴部件

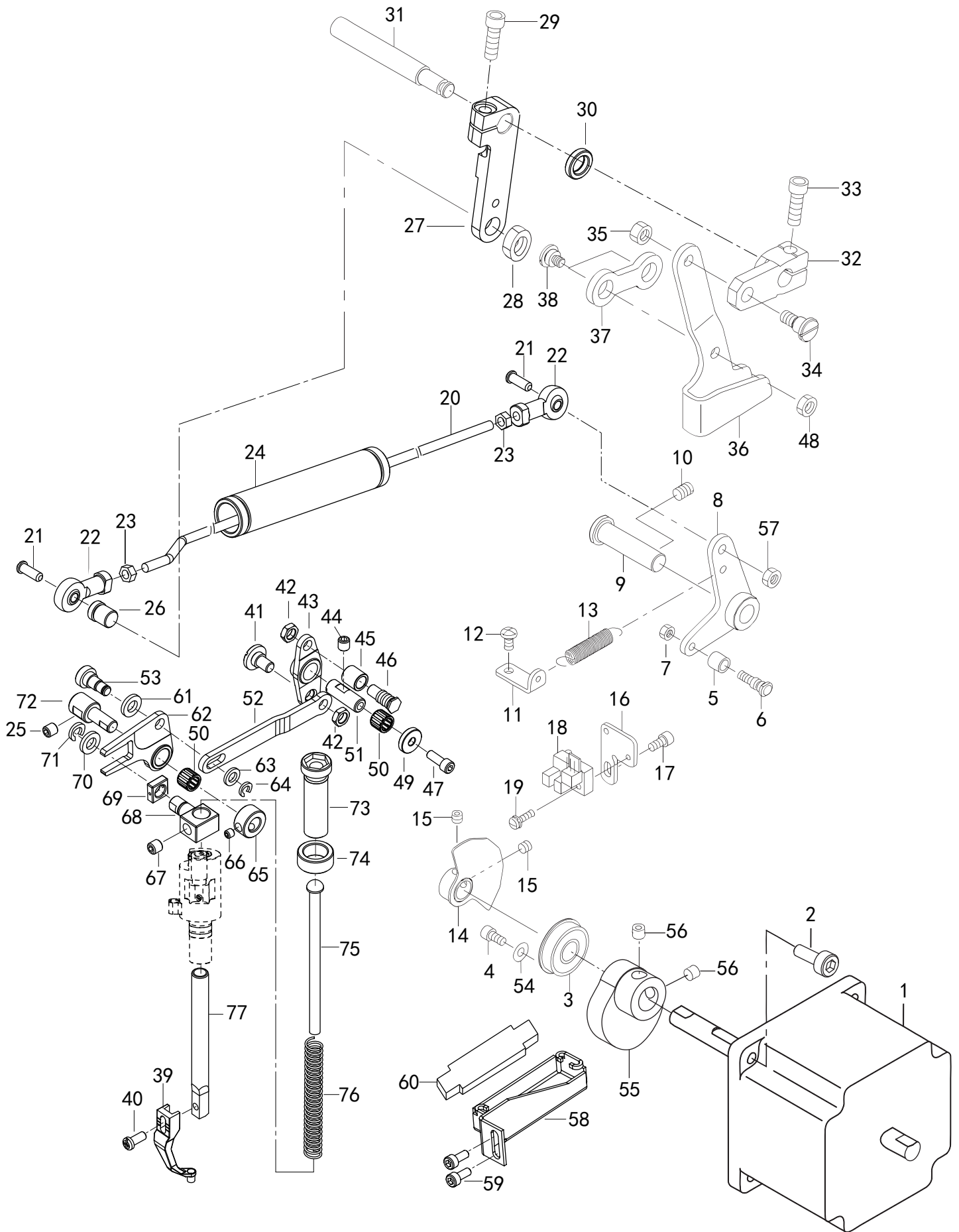


3、下轴部件SHUTTLE DRIVER SHAFT COMPONENTS

序号 Ref.No.	件号 Part No.	名 称	Description	数量 QTY
1	10003781	梭壳	BOBBIN CASE ASM	1
2	10004592	锁芯	BOBBIN	1
3	10010738	梭床盖组件	SHUTTLE RACE RING ASM	1
4	10025068	摆梭	INNER HOOK	1
5	10004609	摆梭托	SHUTTLE DRIVER	1
6	10004611	螺钉	SCREW	1
7	10014297	油封	SHUTTLE OIL SEAL	2
8	10014295	挡圈	SHUTTLE BEARING RING	2
9	10023516	轴承	BEARING	2
10	10023517	轴承	BEARING	2
11	10023518	轴承	BEARING	2
12	10023519	轴承	BEARING	2
13	10022792	梭床小组件	SHUTTLE ASM.	1
14	10014248	梭床	SHUTTLE	1
15	10008576	梭床衬套	SHUTTLE BUSH	1
16	10004261	梭床锁紧钩组件	INNER HOOK PRESSER ASM.	2
17	10004495	弹簧	SPRING	2
18	10009669	挡圈	E-RING	2
19	10004596	梭床簧	SHUTTLE UPPER SPRING	1
20	10010744	螺钉	SCREW	2
21	10011077	毛毡	SHUTTLE OIL FELT	1
22	10011427	毛毡	SHUTTLE OIL FELT	1
23	10008103	油线	OIL WICK	2
24	10007795	油管	FILLER PIPE	2
25	10008103	油线	OIL WICK	1
26	10007795	油管	FILLER PIPE	1
27	10007926	油线夹板	SHUTTLE LUBRICATING PLATE	1
28	10010797	螺钉	SCREW	2
29	10010800	毛毡	SHUTTLE ONCE THROUGH OIL FELT	1
30	10010799	毛毡压板	ONCE THROUGH OIL LFELT PRESSER	1
31	10010744	螺钉	SCREW	2
32	10010817	螺钉	SCREW	1
33	10011426	螺钉	SCREW	1
34	10011425	螺钉	SCREW	1
35	10037224	下轴	LOWER SHAFT	1
36	10035171	油封	OIL SEAL	1
37	10037225	下轴前衬套	SLEEVE A	1
38	10037273	轴承	NUT	1
39	10037298	挡圈	WASHER	1
40	10013590	螺钉	SCREW	2
41	10037223	齿轮	GEARED	1
42	10011232	螺钉	SCREW	2
43	10037227	垫圈	WASHER	1
44	10037226	下轴后轴套	SLEEVE B	1
45	10035171	油封	OIL SEAL	1
46	10005107	螺钉	SCREW	1
47	10008228	SN-3A夹头	CABLE CLIP	1
48	10012892	螺钉	SCREW	2
49	10011101	螺钉	SCREW	1
50	10008229	SL-12N夹头	CABLE CLIP	1
51	10014294	油管限位板	OIL PIPE HOLDER	1
52	10014288	油管限位板	TUBE_CLAMP	1
53	10021601	油窗组件	OIL TANK ASM.	1
54	10014296	油塞	RUBBER BUSH	2
55	10010685	螺钉	SCREW	1
56	10011916	油量调节销	NYLON BUSH 4.6×10	1
57	10011232	螺钉 M6×6	SCREW M6×6	2

4.LEFT PRESSERS COMPONENTS

抬压部件



4、抬压部件LIFT PRESSER COMPONENTS

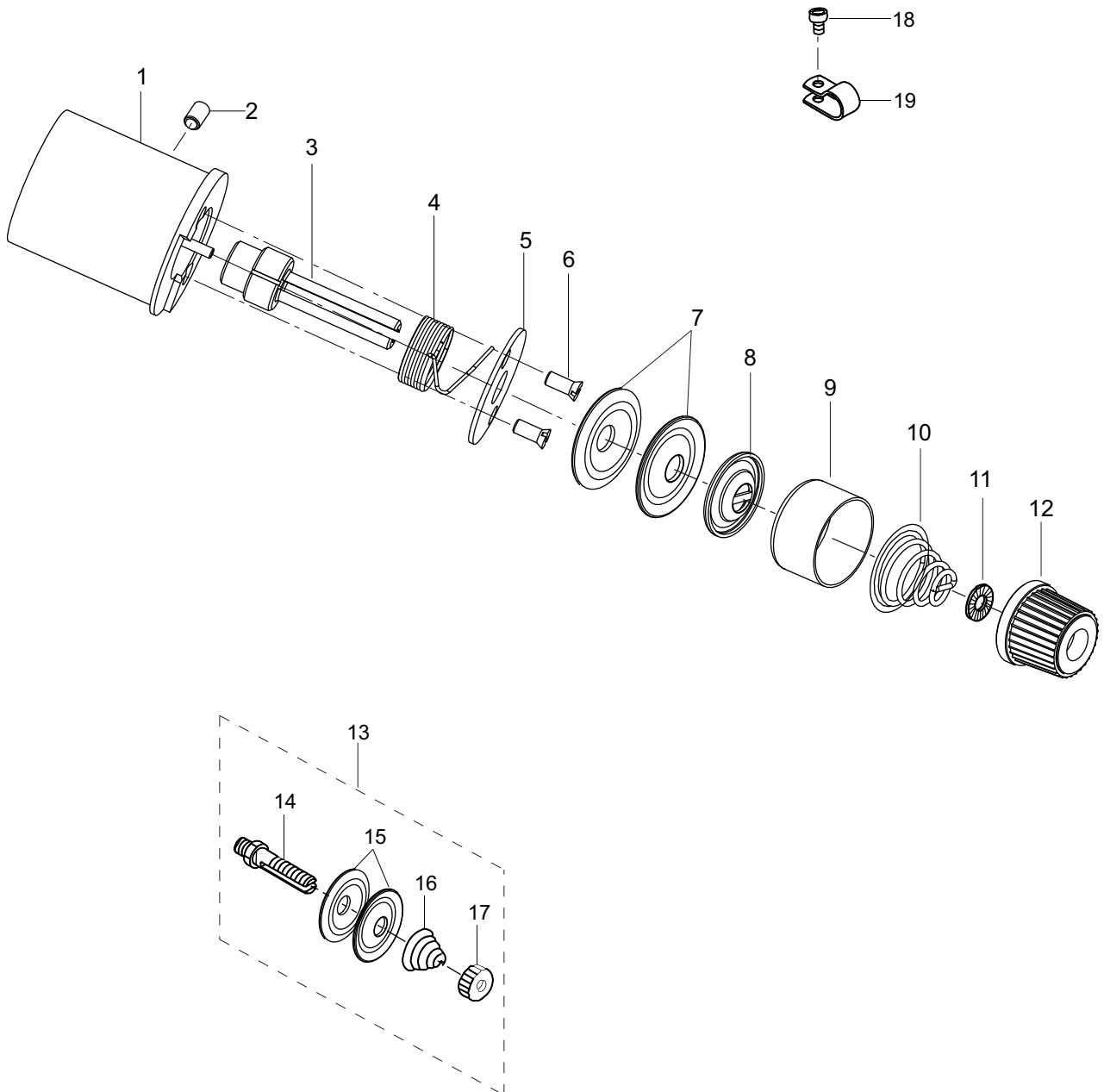
序号 Ref.No.	件号 Part No.	名 称	Description	数量 QTY
1	10053612	抬压电机-03	PRESSER LIFTING MOTOR-03	1
	10053604	抬压电机-04	PRESSER LIFTING MOTOR-04	1
2	10011644	螺钉	SCREW	4
3	10003601	轴承	BEARING	1
4	10010668	螺钉	SCREW	1
5	10028245	销套	NEEDLE CAM ROLLER A	1
6	10014342	销	UTT CAM ROLLER SHAFT	1
7	10014354	螺母	NUT	1
8	10037252	抬压曲柄组件	LIFTER LINK A ASM	1
9	10052771	抬压曲柄轴	THREAD TRIMMER SHAFT	1
10	10011232	螺钉	SCREW	1
11	10014343	拉板	SIDE COVER THREAD GUIDE	1
12	10012892	螺钉	SCREW	1
13	10014356	弹簧	SPRING	1
14	10054709	抬压电机传感片组件	SENSOR SLIT	1
15	10011518	螺钉	SCREW	2
16	10014291	抬压传感器安装板	SENSOR_INSTALLING_BASE	1
17	10010668	螺钉	SCREW	1
18	10026622	抬压传感器	PHOTO SENSOR	1
19	10010667	螺钉组件	SCREW	1
20	10037234	抬压拉杆	LIFTER LINK B	1
21	10037250	螺钉	SCREW	2
22	10011586	万能接头组件	UNIVERSAL CONTACT JOINT	2
23	10003075	螺母	NUT	2
24	10037235	抬压拉杆套	PULL-ROD BUSH	1
25	10005295	螺钉	SPRING	1
26	10037238	螺钉	SCREW	1
27	10037236	拨线曲柄	CONNECTING ARM	1
28	10037825	螺母	NUT	1
29	10010735	螺钉	SCREW	1
30	10037237	垫圈	WASHER	1
31	10011914	曲柄轴	CONNECTING SHAFT	1
32	10014340	抬压驱动曲柄	LOWERING ARM	1
33	10010735	螺钉	SCREW	1
34	10010674	螺钉	SCREW	1
35	10010725	螺母	NUT	1
36	10014355	抬压传动板	LOWERING FOOT	1
37	10010684	抬压脚定位连杆	CONNECTING LINK	1
38	10010727	螺钉	SCREW	2
39	10030536	中压脚	MID FEET	1
40	10010650	螺钉	SCREW	1
41	10014344	螺钉	SCREW	1
42	10010725	螺母	NUT	2
43	10030519	中压脚曲柄	WINCH	1
44	10022863	螺钉	SCREW	2
45	10030525	销套	PIN SET	1
46	10030523	销	PIN	1
47	10000342	螺钉	SCREW	1
48	10010725	螺母	NUT	1
49	10030521	中压脚曲柄盖板	COVER BOARD	1

4、抬压部件LIFT PRESSER COMPONENTS

序号 Ref.No.	件号 Part No.	名 称	Description	数 量 QTY
50	10003975	轴承	BEARING	2
50	10001587	轴承	BEARING	(2)
50	10003971	轴承	BEARING	(2)
50	10003972	轴承	BEARING	(2)
51	10030520	销	PIN	1
52	10030526	中压脚摆动拉杆	ASWAY POLE	1
53	10030531	螺钉	SCREW	1
54	10010741	垫圈	WASHER	1
55	10014287	抬压凸轮	LIFT TO PRESS THE CAM	1
56	10011232	螺钉	SCREW	2
57	10010133	螺母	NUT	1
58	10028675	抬压凸轮油槽	GREASE SLOT	1
59	10010685	螺钉	SCREW	2
60	10010685	毛毡	OIL FLET	1
61	10030529	左垫圈	LEFT WASHER	1
62	10030527	中压脚摆动曲柄	ASWAY WINCH	1
63	10030530	右垫圈	RIGHT WASHER	1
64	10009653	卡簧	RETAINING RING	1
65	10005745	挡圈	THRUST COLLAT	1
66	10013590	螺钉	SCREW	2
67	10013444	螺钉	SCREW	1
68	10030535	压杆导架	ORIENTED PIECE	1
69	10030534	摆动曲柄滑块	SLIP PIECE	1
70	10030524	垫圈	WASHER	1
71	10007859	卡簧	RETAINING RING	1
72	10030528	销	PIN	1
73	10031165	调压螺钉	ADJUSTIVE SCREW	1
74	10031166	调压螺母	ADJUSTIVE NUT	1
75	10012426	调压导杆	ADJUSTIVE LEADER	1
76	10004505	弹簧	SPRING	1
77	10010646	压杆	POLE	1

5.THREAD TENSION COMPONENTS

松线器组件

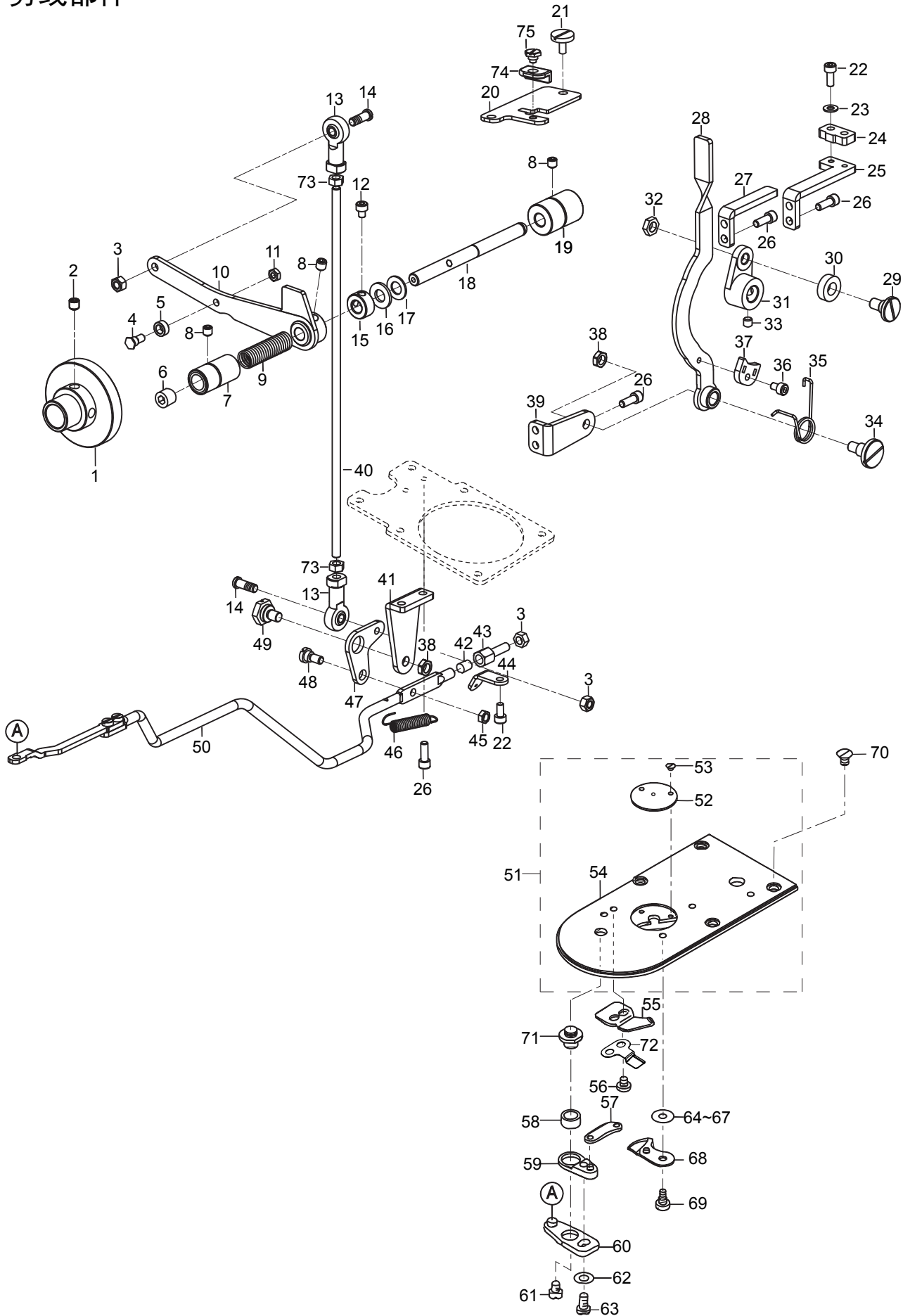


5、松线部件THREAD TENSION COMPONENTS

序号 Ref.No.	件号 Part No.	名 称	Description	数量 QTY
1	10056036	电磁铁组件	THREAD TENSION ELECTROMAGNET	1
2	10026903	螺钉	SCREW	1
3	10042941	夹线螺钉	SCREW	1
4	10039203	弹簧	SPRING	1
5	10037243	锁紧块	LOCK PLATE	1
6	10052062	螺钉	SCREW	2
7	10005489	过线板	THREAD TENSION DISK	2
8	10004625	松线板	THREAD TENSION DISK PRESSER	1
9	10004598	夹线簧座	TENSION NUT	1
10	10004626	弹簧	SPRING	1
11	10004633	夹线制动板	ROTATING STOPPER	1
12	10004783	夹线螺母	THREAD TENSION NUT	1
13	10011493	夹线组件	FIRST THREAD TENSION ASM	1
14	10004666	螺钉	SCREW	1
15	10004393	夹线板	THREAD TENSION DISK	2
16	10004669	弹簧	SPRING	1
17	10004664	夹线螺母	TENSION NUT	1
18	10010685	螺钉	SCREW	2
19	10008228	SN-3A夹头	CABLE CLIP	3

6.THREAD TRIMMER MECHANISM COMPONENTS

剪线部件



6、剪线部件 THREAD TRIMMER MECHANISM COMPONENTS

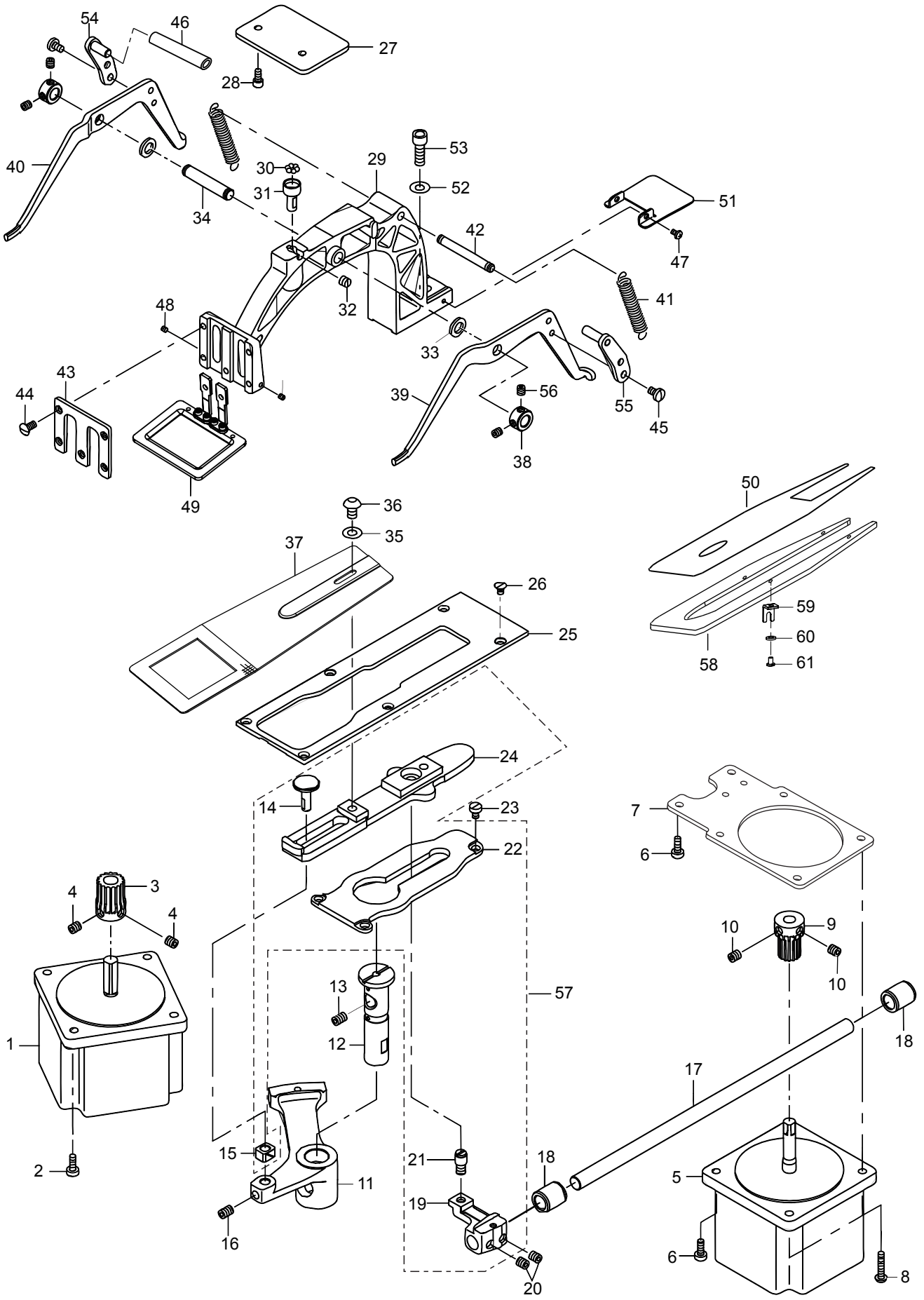
序号 Ref.No.	件号 Part No.	名称	Description	数量 QTY
1	10052770	剪线凸轮	TRIMMING CAM	1
2	10011642	螺钉 SM1/4"×40 L=6	SCREW SM1/4"×40 L=6	2
3	10010133	螺母 M5	NUT M5	3
4	10011445	螺钉 SM11/64"×40	SCREW SM11/64"×40	1
5	10011441	剪线凸轮滚柱	ROLLER	1
6	10052702	螺钉 M12×1 L=8	SCREW M12×1 L=8	1
7	10052685	剪线轴前轴套	BUSHING	1
8	10010678	螺钉 SM15/64"×28 L=8	SCREW SM15/64"×28 L=8	3
9	10011450	弹簧	SPRING	1
10	10052700	剪线驱动曲柄组件	TRIMMING DRIVE ASM	1
11	10014354	螺母 SM11/64"×40	NUT SM11/64"×40	1
12	10003382	螺钉 SM11/64"×40 L=4.5	SCREW SM11/64"×40 L=4.5	2
13	10011586	万能接头组件	UNIVERSAL CONTACT JOINT	2
14	10037250	螺钉 M5	SCREW M5	2
15	10004600	挡圈	COLLAR	1
16	10011498	8×16.2×1.7垫圈	WASHER 8×16.2×1.7	1
17	10014394	8.2×15×1垫圈	WASHER 8.2×15×1	1
18	10052683	剪线轴	TRIMMING SHAFT	1
19	10052684	剪线轴后轴套	BUSHING	1
20	10052693	限位板	LOCATION-LIMITED PLATE	1
21	10011101	螺钉 SM11/64"×40 L=11	SCREW SM11/64"×40 L=11	2
22	10005041	螺钉 M4 L=10	SCREW M4 L=10	3
23	10011680	垫圈 4.6×9.7×0.8	WASHER 4.6×9.7×0.8	2
24	10054206	压杆组件限位板	LOCATION-LIMITED PLATE	1
25	10052690	驱动件限位板	DRIVING LOCATION-LIMITED PLATE	2
26	10013616	螺钉 SM11/64"×40 L=12	SCREW SM11/64"×40 L=12	8
27	10053220	驱动件限位板 II	DRIVING LOCATION-LIMITED PLATE II	1
28	10052696	压杆组件	PRESSURE LEVER ASM	1
29	10052699	螺钉 SM1/4"×40	SCREW SM1/4"×40	1
30	10003534	688ZZ轴承	BEARING 688ZZ	1
31	10052687	剪线主动曲柄	TRIMMING DRIVE CRANK	1
32	10013216	SM1/4"×28螺母	NUT SM1/4"×28	1
33	10011232	螺钉 M6×6	SCREW M6×6	2
34	10052689	螺钉 SM11/64"×28	SCREW SM11/64"×28	1
35	10052688	弹簧	SPRING	1
36	10010685	螺钉 M4 L=6	SCREW M4 L=6	1
37	10054205	剪线驱动推杆毛毡	OIL FELT PAD	1
38	10010725	螺母 SM15/64"×28	NUT SM15/64"×28	2
39	10052697	支板	SUPPORT PLATE	1
40	10052692	凸轮端剪线拉杆	CONNECTING ROD	1
41	10052698	支撑板	SUPPROT PLATE	1
42	10050266	消音塞	SILENCER	1
43	10054204	限位螺钉 M5	LOCATION-LIMITED SCREW M5	1
44	10054137	剪线刀拉杆拉板	THREAD CUTTER RESET PLATE	1
45	10011682	螺母 SM3/16"×28	NUT SM3/16"×28	1
46	10011448	弹簧	SPRING	1
47	10052773	剪线曲柄	TRIMMING CRANK	1
48	10011449	螺钉 SM3/16"×28	SCREW SM3/16"×28	1
49	10011446	螺钉 SM15/64"×28	SCREW SM15/64"×28	1
50	10053227	剪线拉杆组件	CONNECTING BAR ASM	1

6、剪线部件 THREAD TRIMMER MECHANISM COMPONENTS

序号 Ref.No.	件号 Part No.	名 称	Description	数量 QTY
51	10014298	针板组件	NEEDLE PATE ASM.	1
52	10047532	小针板	NEEDLE HOLE GUIDE	1
53	10011509	螺钉	SCREW	2
54	10008027	针板	NEEDLE PLATE	1
55	10011501	定刀	FIXING KNIFE	1
56	10011499	螺钉	SCREW	2
57	10011453	动刀连杆	MOVING KNIFE LINK	1
58	10011502	动刀杆销衬套	THREAD CUTTING LEVER RING	1
59	10010733	动刀曲柄分组件	THREAD CUTTER LEVER ASM., SMAL	1
60	10010737	动刀传动杆分组件	THREAD CUTTER LEVER ASM., LARG	1
61	10011503	螺钉	SCREW	1
62	10011506	垫圈	WASHER	1
63	10009906	螺钉	SCREW	1
64	10007183	垫圈	WASHER	1
65	10007361	垫圈	WASHER	(1)
66	10007362	垫圈	WASHER	(1)
67	10007363	垫圈	WASHER	(1)
68	10011513	动刀分组件	MOVING KNIFE ASM.	1
69	10011500	螺钉	SCREW	1
70	10011511	螺钉	SCREW	1
71	10011455	螺钉	SCREW	1
72	10037254	底线夹线弹簧片	LOWER THREAD CLAMP SRING	1
73	10003075	螺母 M5	NUT M5	2
74	10057258	驱动曲柄限位块	LOCATION-LIMITED PLATE	1
75	10011489	螺钉 SM11/64"×40	SCREW SM11/64"×40	1

7.FEED MECHANISM COMPONENTS

送料部件



7、送料部件FEED MECHANISM COMPONENTS

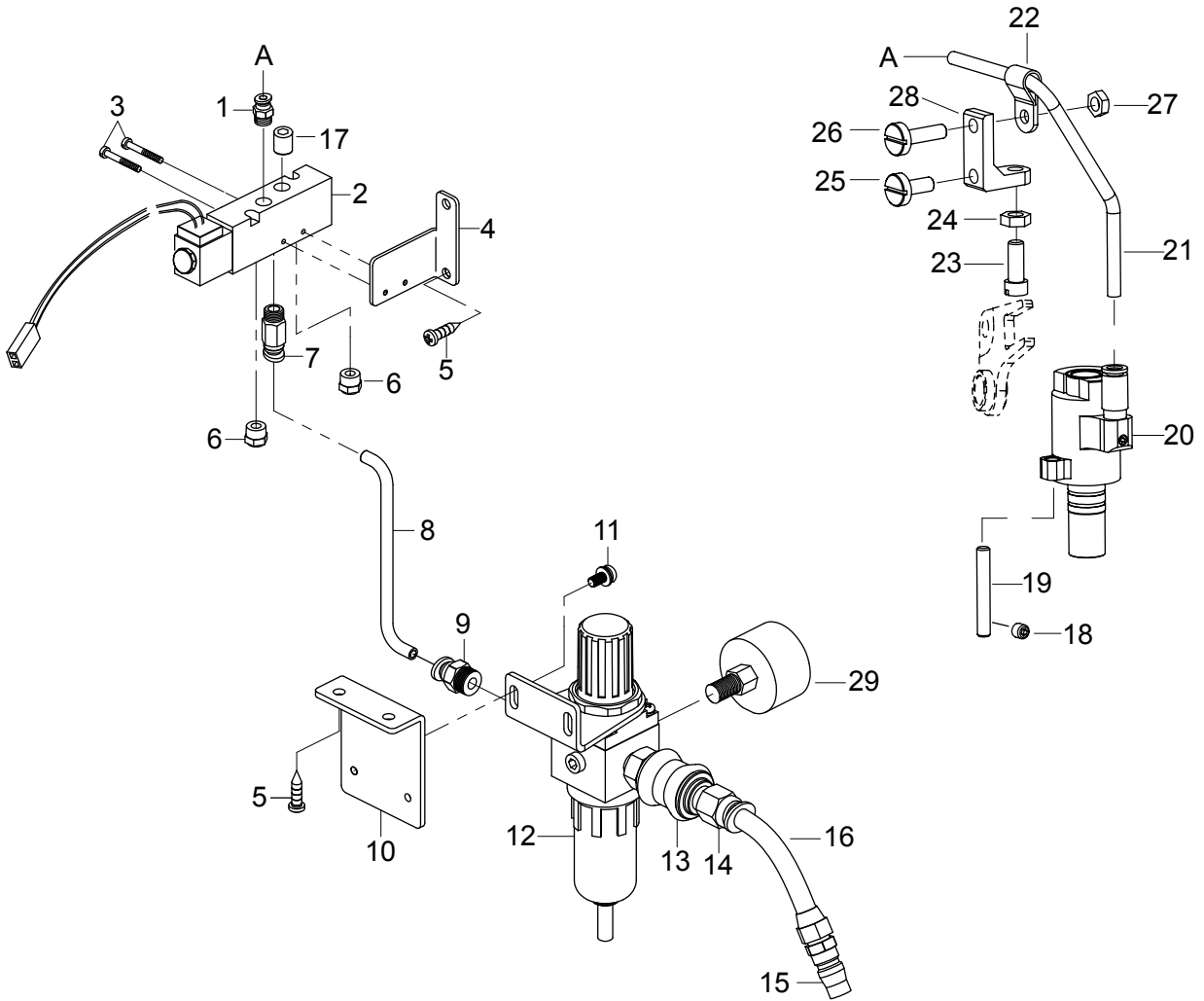
序号 Ref.No.	件号 Part No.	名 称	Description	数量 QTY
1	10053613	闭环X轴步进电机-03	X FEED STEPPING MOTOR	1
1	10053841	闭环X轴步进电机-04	X FEED STEPPING MOTOR	1
2	10011644	螺钉	SCREW	4
3	10011638	齿轮	GEAR	1
4	10011232	螺钉	SCREW	2
5	10053614	闭环Y轴步进电机-03	Y FEED STEPPING MOTOR	1
5	10053842	闭环Y轴步进电机-04	Y FEED STEPPING MOTOR	1
6	10011644	螺钉	SCREW	2
7	10052686	Y轴步进电机安装板	Y-AXIS STEPPER MOTOR MOUNTING PLATE	1
8	10000157	螺钉	SCREW	4
9	10011640	齿轮	GEAR	1
10	10011232	螺钉	SCREW	2
11	10030543	齿轮	GEAR	1
12	10011573	X向铰轴	X HINGE AXIS	1
13	10010678	螺钉	SCREW	1
14	10011562	X向滑块轴	SLIDE BLOCK STUD	1
15	10011194	X向滑块	SQUARE BLOCK	1
16	10010678	螺钉	SCREW	1
17	10014326	Y向驱动轴	BUSHING, REAR	1
18	10011571	轴套	BUSHING, REAR	2
19	10030539	Y向驱动轴夹头	LENGTHWISE FEED ARM	1
20	10011642	螺钉	SCREW	2
21	10011568	螺钉	SCREW	1
22	10030538	送料托架支撑板	CLOTH FEED SUPPORT PLATE	1
23	10011142	螺钉	SCREW	3
24	10030537	送料托架	CLOTH FEED PLATE	1
25	10014322	盖板	CLOTH FEED PRESSER PLATE	1
26	10011566	螺钉	SCREW	6
27	10014300	送料架支撑板	SUPPORT PLATE	1
28	10011559	螺钉	SCREW	2
29	10031161	送料架	FEED BRACKET	1
30	10011574	钢球	WORK CLAMP FOOT MONTING BASE	7
31	10011561	钢球座	BALL RETAINER	1
32	10011564	螺钉	SCREW	1
33	10014394	垫圈	WASHER	2
34	10028963	提升架轴	LIFTING LEVER SHAFT	1
35	10011646	垫圈	WASHER	2
36	10011569	螺钉	SCREW	1
37	10030549	送料板	FEED PLATE	1
38	10004600	挡圈	THRUST COLLAR	2
39	10011454	右压脚提升架	LIFTING LEVER, RIGHT	1
40	10011567	左压脚提升架	LIFTING LEVER, LEFT	1
41	10011558	弹簧	CLOTH PRESSER SPRING	2
42	10011456	拉簧支轴柱	SPRING SUSPENSION	1
43	10011557	压脚面板	WORK CLAMP FOOT FACE PLATE	1
44	10011510	螺钉	SCREW	5
45	10009906	螺钉	SCREW	4
46	10030550	提升架套	SET UP SHELF SLEEVE	1
47	10011143	螺钉	SCREW	2
48	10003383	螺钉	SCREW	2

7、送料部件FEED MECHANISM COMPONENTS

序号 Ref.No.	件号 Part No.	名称	Description	数量 QTY
49	10030546	布压脚组件	WORK CLAMP FOOT ASM.	1
50	10031169	托板贴膜	PROTECTIVE FILM	1
51	10014359	送料架后拖板	HIDDEN_PLATE	1
52	10006013	垫圈	WASHER	1
53	10010735	螺钉	SCREW	1
54	10024705	左压脚提升导板组件	LEVER DRIVING PLATE ASM.	1
55	10024706	右压脚提升导板组件	LEVER DRIVING PLATE ASM.	1
56	10013590	螺钉	SCREW	4
57	10031162	送料托架组件	CLOTH FEED PLATE ASM	1
58	10030551	压脚托板	FEET SPLINT	1
59	10030552	压脚托板座	FEET SPLINT PEDESTAL	4
60	10010741	垫圈	WASHER	4
61	10011142	螺钉	SCREW	4

8. PNEUMATIC COMPONENTS

气动部件

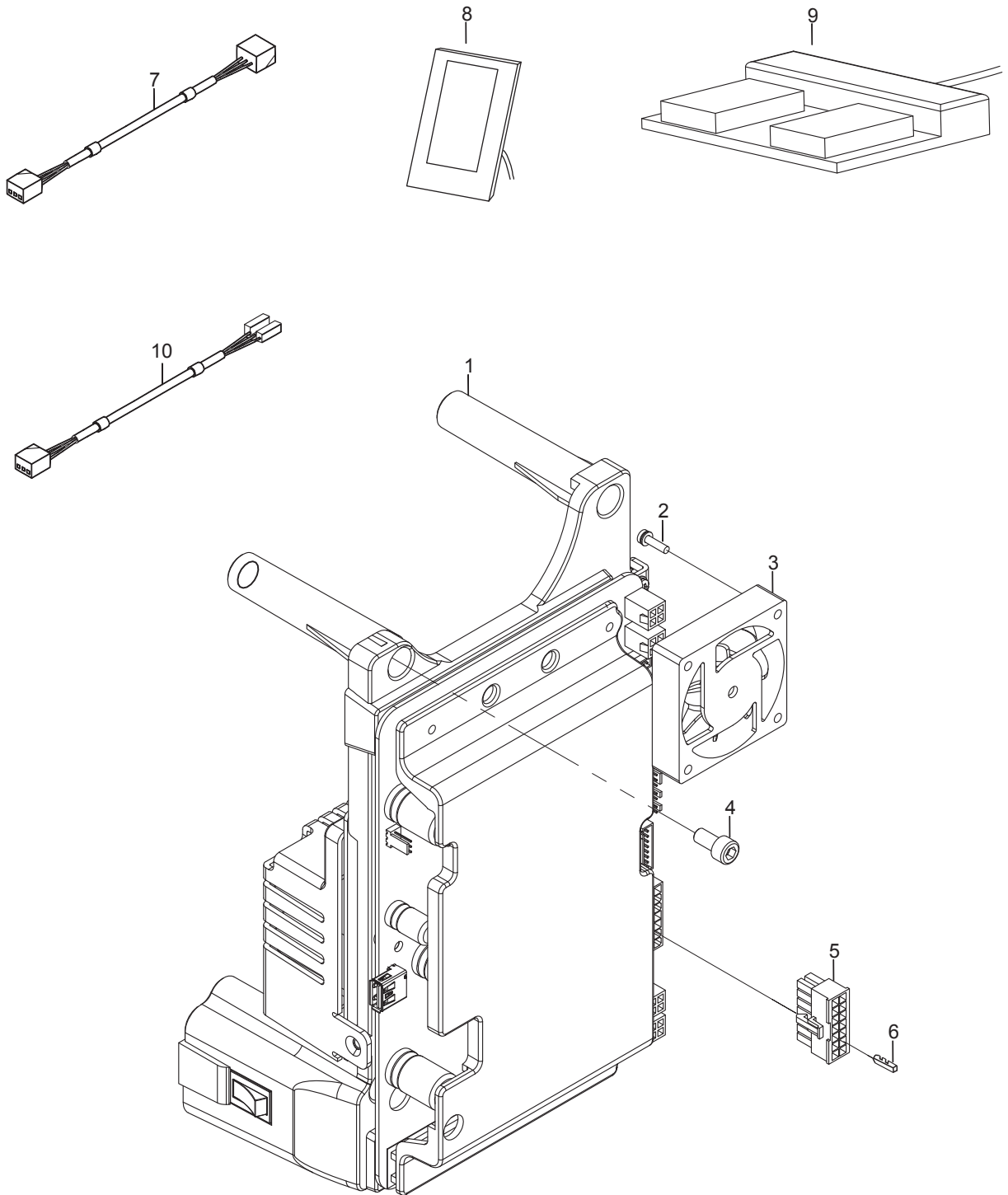


8、气动部件 PNEUMATIC COMPONENTS

序号 Ref.No.	件号 Part No.	名 称	Description	数量 QTY
1	10023253	快速接头 $\phi 4 \times R1/8$	HALF UNION $\Phi 4 \times R1/8$	2
2	10007696	电磁阀	5 PORT SOLENOID VALVE	1
3	10002148	气阀安装螺钉 M3 L=25	SCREW M3 L=25	2
4	10007583	气阀安装板	SOLENOID_VALVE_FITTING_BASE	1
5	10026825	螺钉	SCREW	4
6	10001548	消声器	MUFFLER	3
7	10003724	快速接头 $\phi 6 \times R1/8$	HALF UNION $\Phi 6 \times R1/8$	1
8	10008150	气管 $\phi 4 \times \phi 6$	TUBE	1
9	10003733	快速接头 $\phi 6 \times R1/4$	HALF UNION $\Phi 6 \times R1/4$	1
10	10001107	固定板	FILTER_INSTALLING_PLATE	1
11	10003883	螺钉 M5 L=10	SCREW M5 L=10	2
12	10007604	过滤减压阀	FILTER REGULATOR	1
13	10007534	手滑阀	HAND SLIDE VALVE	1
14	10003458	快速接头 $\phi 10 \times R1/4$	HALF UNION $\Phi 10 \times R1/4$	1
15	10024399	接头 $\phi 10 \times R1/4$	PLUG $\Phi 10 \times R1/4$	1
16	10008151	气管 $\phi 8 \times \phi 10$	TUBE	1
17	10007705	堵头	PLUG	1
18	10011802	螺钉	SCREW	1
19	10033246	销	PIN	1
20	10033245	气缸组件	AIR CYLINDER BASE	1
21	10008119	气管 $\phi 2.5 \times \phi 4$	TUBE	1
22	10008228	SN-3A夹头	CABLE CLIP	1
23	10011184	螺钉	SCREW	1
24	10013710	螺母	NUT	1
25	10011101	螺钉	SCREW	1
26	10008831	螺钉	SCREW	1
27	10010370	螺母	NUT	1
28	10033441	限位块	LIMITED BLOCK	1
29	10007620	带压力开关的压力表	AIR PRESSURE SWITCH	1

9. ELECTRONIC CONTROL SYSTEM COMPONENTS (-03)

自动控制部件 (-03)

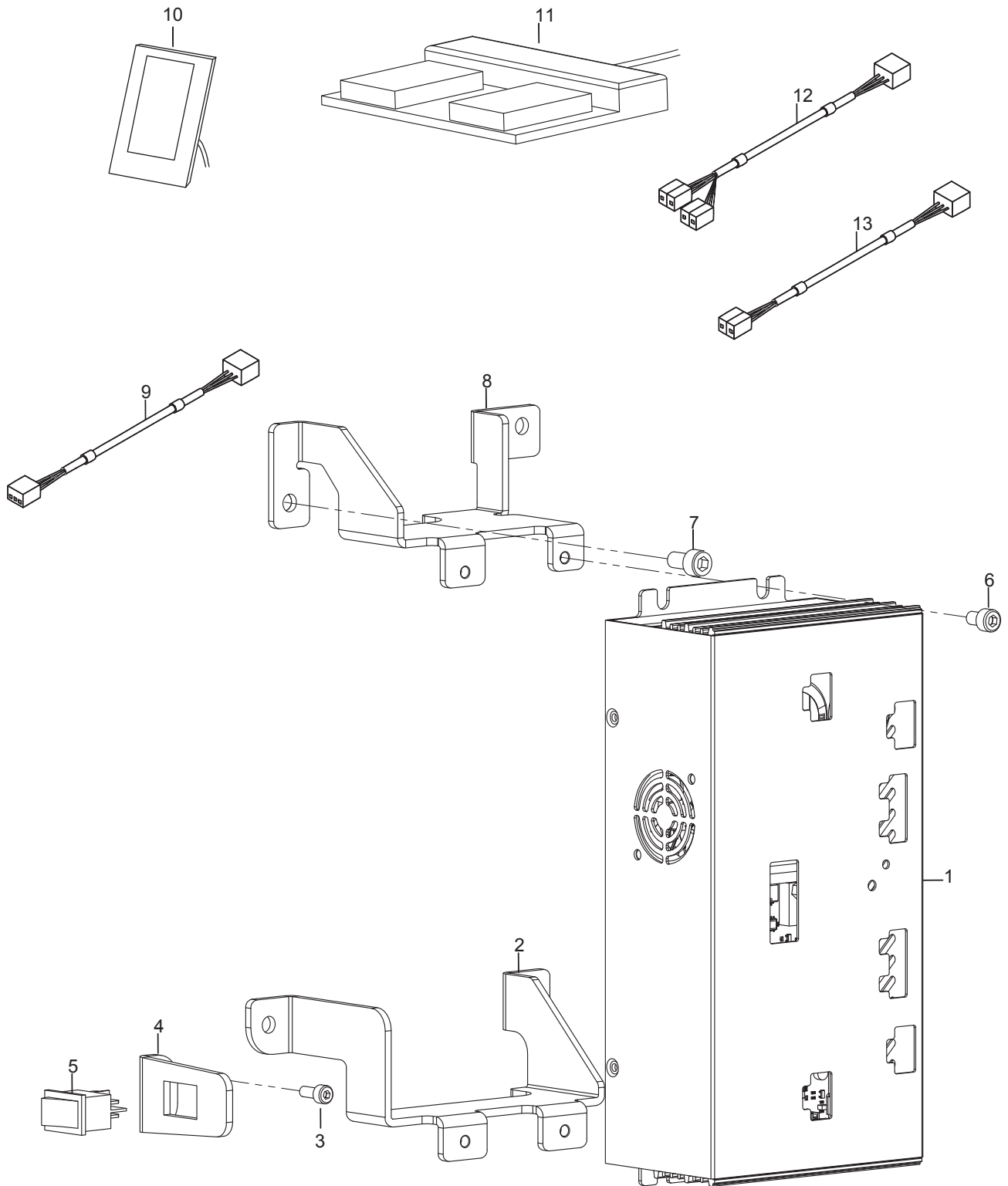


9、自动控制部件ELECTRONIC CONTROL SYSTEM COMPONENTS (-03)

序号 Ref.No.	件号 Part No.	名称	Description	数量 QTY
1	10053287	一体式电控箱组件	ELECTRONIC CONTROL SYSTEM ASM	1
2	10002749	螺钉M3×12	SCREW M3×12	4
3	10054553	风扇	FAN	1
4	10011824	螺钉M6×12	SCREW M6×12	4
5	10054552	白色10P公端插头	10P PLUG	1
6	10002459	芯针孔端	CONTACT PIN	2
7	10053616	抬压传感线	TT SENSOR CABLE ASM	1
8	10056168	操作面板	OPERATION PANEL	1
9	10058874	脚踏板	FOOT PEDAL ASM	1
10	10059369	电磁阀转接线	SOLENOID VALVE CONNECTING CABLE	1

10. ELECTRONIC CONTROL SYSTEM COMPONENTS (-04)

自动控制部件 (-04)

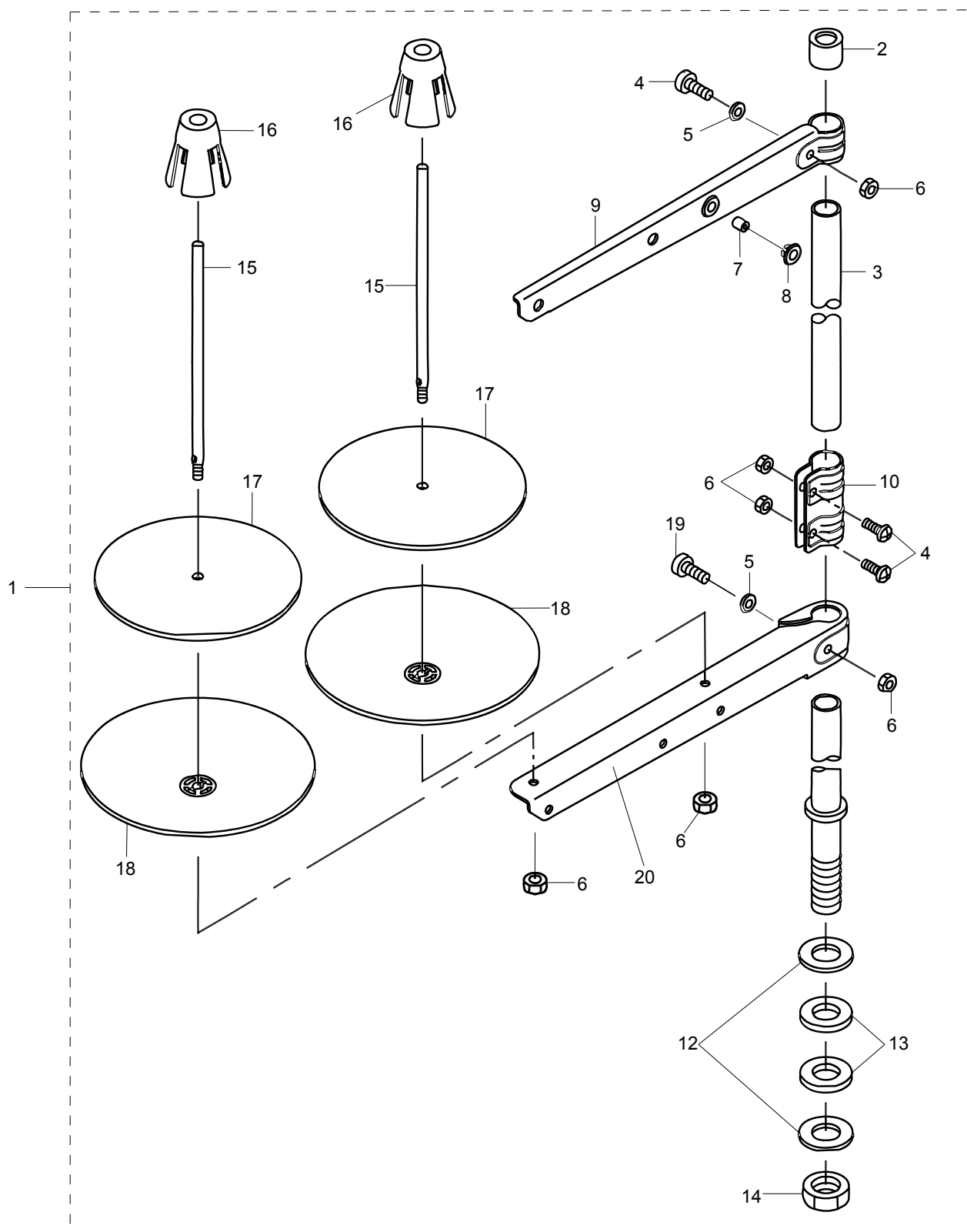


10、自动控制部件ELECTRONIC CONTROL SYSTEM COMPONENTS (-04)

序号 Ref.No.	件号 Part No.	名称	Description	数量 QTY
1	10053286	一体式电控箱组件	ELECTRONIC CONTROL SYSTEM ASM	1
2	10057430	电控下支撑板	CONTROL BOX INSTALLING BASE DOWN	1
3	10005041	螺钉 M4×10	SCREW M4×10	2
4	10057431	电源开关安装座	POWER SWITCH INSTALLING BASE	1
5	10057914	船形电源开关	POWER SWITCH	1
6	10012028	螺钉 M5×8	SCREW M5×8	4
7	10011824	螺钉 M6×12	SCREW M6×12	4
8	10057429	电控上支撑板	CONTROL BOX INSTALLING BASE UP	1
9	10053606	抬压传感线	TT SENSOR CABLE ASM	1
10	10050773	操作面板	OPERATION PANEL	1
11	10059376	脚踏板	FOOT PEDAL ASM	1
12	10058021	夹线电磁铁转接线缆	CONNECTING CABLES ASM	1
13	10059370	电磁阀转接线1	SOLENOID VALVE CONNECTING CABLE	1

11.THREAD ST AND COMPONENTS

线架部件

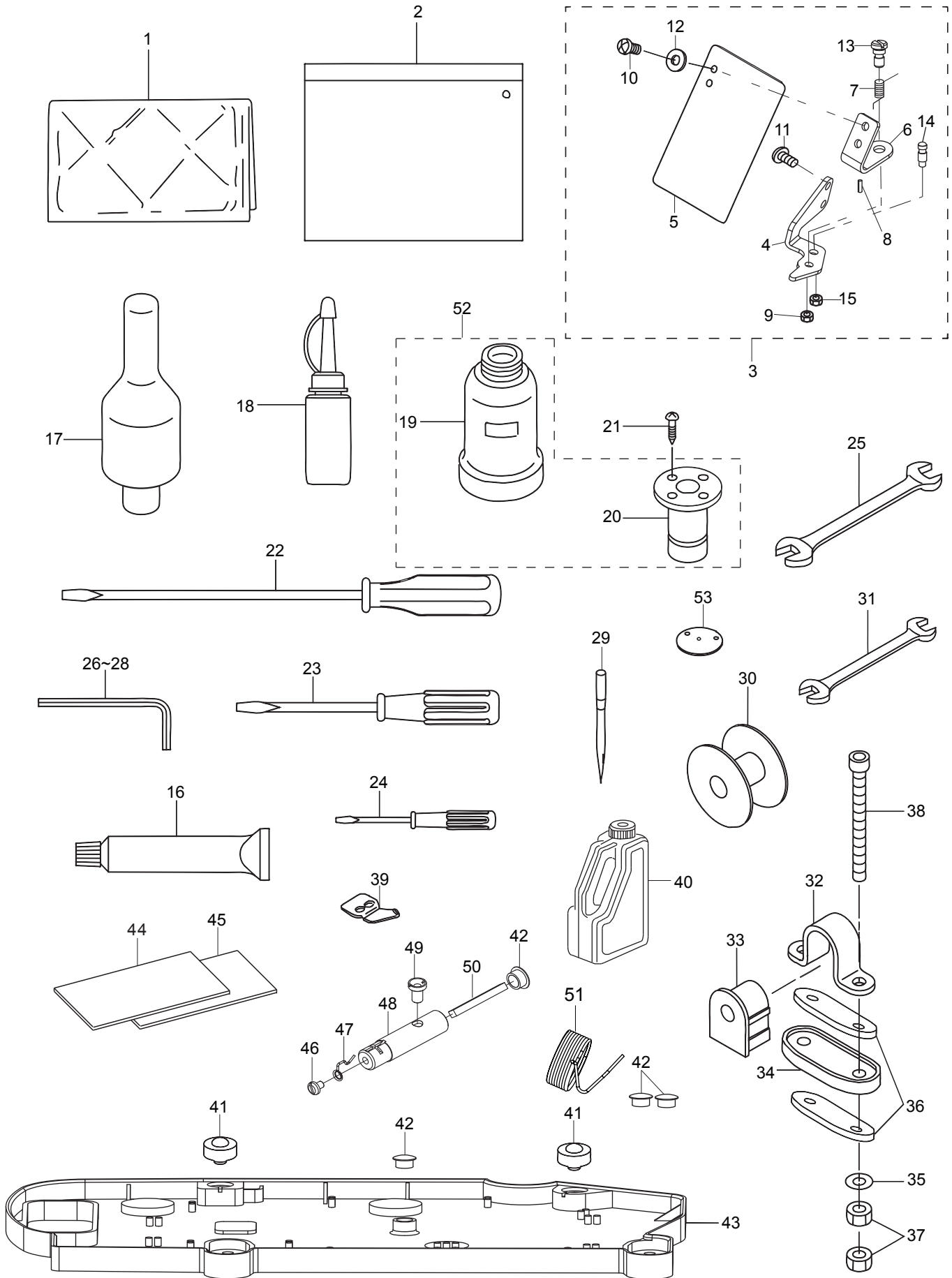


11、线架部件THREAD STAND COMPONENTS

序号 Ref.No.	件号 Part No.	名称	Description	数量 QTY
1	10007130	二线架组件	THREAD STAND ASM	1
2	10004282	撑管套	COLUMN CAP	1
3	10004293	线架上撑管	COLUMN PIPE	1
4	10003301	上过线架螺钉	SCREW	2
5	10003022	上过线架垫圈	WASHER	2
6	10002953	上过线架螺母	NUT	5
7	10004289	过线管	THREAD GUIDE PIPE	2
8	10004285	过线管套	THREAD GUIDE BUSHING	2
9	10004298	上过线架	THREAD HANGER	1
10	10004286	撑管夹	COLUMN PIPE CONNECTOR	1
11	10004291	线架下撑管	COLUMN PIPE	1
12	10004295	线架下撑管垫圈	WASHER	2
13	10004290	垫圈	WASHER	2
14	10002985	下过线架螺母	NUT	1
15	10004288	线轴	SPOOL PIN	2
16	10004287	线盘塑料压块	SPOOL CUSHION	2
17	10004281	线盘软垫	SOFT CUSHION OF THREAD PLARE	2
18	10004299	线盘	THREAD PLATE	2
19	10003312	下过线架螺钉	SCREW	1
20	10004292	下过线架	THREAD HANGER	1

12.ACCESSORIES PART COMPONENTS

附件



12、附件ACCESSORIE PART COMPONENTS

序号 Ref.No.	件号 Part No.	名称	Description	数量 QTY
1	10001177	机头罩	VINYL COVER	1
2	10004971	机头薄膜袋	ACCESSORY BOX	1
3	20004358	眼睛防护罩组件	SAFETY PLATE ASM.	1
4	10011632	安全板座	SAFETY PLATE INSTALLING BASE	1
5	10011636	安全板	SAFETY PLATE	1
6	10004725	安全板架	SAFETY PLATE INSTALLING PLATE	1
7	10011678	弹簧	SPRING	1
8	10002880	销	PIN	1
9	10004507	螺母	NUT	1
10	10011570	螺钉	SCREW	2
11	10011570	螺钉	SCREW	2
12	10011680	垫圈	WASHER	2
13	10011677	螺钉轴	HINGE SCREW	1
14	10011633	销	PIN	1
15	10011682	螺母	NUT	1
16	20009052	油脂软膏	GREASE	1
17	10011749	机头支承杆	HEAD SUPPORT BAR	1
18	10005356	油壶	OILER	1
19	10011681	油杯	OIL CAN	1
20	10011683	油杯座	OIL MANAGEMENT	1
21	10003157	螺钉	SCREW	8
22	10010994	大螺丝刀	SCREW DRIVER LARGE	1
23	10010995	中螺丝刀	SCREW DRIVER MIDDLE	1
24	10013185	小螺丝刀	SCREW DRIVER SMALL	1
25	10003368	呆扳手	WRENCH	1
26	10009685	内六角扳手3	HEXAGONAL WRENCH SMALL	1
27	10009687	内六角扳手4	HEXAGONAL WRENCH LARGE	1
28	10009689	内六角扳手5	HEXAGONAL SPANNER	1
29	10023286	机针	NEEDLE	1
30	10004592	梭芯	BOBBIN	1
31	10003369	呆扳手	WRENCH	1
32	10011160	支撑固定架	BED HINGE	2
33	10011137	机头胶垫	HINGE RUBBER	2
34	10014251	机头胶垫底座	BED HINGE RUBBER	2
35	10003076	垫圈	WASHER	4
36	10011747	垫片	WASHER	4
37	10003084	螺母	NUT	4
38	10011147	螺栓	SCREW	4
39	10011501	定刀	FIXING KNIFE	1
40	10004455	油箱	OIL BOX	1
41	10013102	机头座垫	SUPPORT RUBBER	2
42	10011136	橡胶塞	RUBBER PLUG	4
43	10053602	油盘	OIL TRAY	1
44	10056191	0604使用说明书	INSTRUCTIONS	1
45	10056192	0604零件手册	PARTS LIST	1
46	10011142	螺钉 SM11/64"×40 L=6	SCREW SM11/64"×40 L=6	1
47	10011918	硅油盒过线架	THREAD GUIDE SPRING	1
48	10011920	硅油盒	SOLICONE OIL BOX	1
49	10011917	螺钉 SM15/64"×40	SCREW SM15/64"×28	1
50	10011919	毛毡	OIL FELT	1
51	10039203	挑线簧	SPRING	2
52	10006185	油杯组件	OILER ASM	1
53	10004646	小针板 (φ 1.6)	NEEDLE HOLE GUIDE	1